

INSIDE THE CIRCLE:

A PROVEN METHOD FOR A SUCCESSFUL MARCHING BAND

By Matt and Ben Harloff

WOODWIND CHAPTER

BASS CLARINET PART

2nd Edition

TABLE OF CONTENTS

| | |
|--|---------|
| Mouthpiece Exercises..... | Page 3 |
| Embouchure Development..... | Page 4 |
| • Exercise #1-Perfect 4th, Low-High: Page 4 | |
| • Exercise #1a-Perfect 4th, Low-High: Page 4 | |
| • Exercise #2-Perfect 5th, Low-High: Page 4 | |
| • Exercise #2a-Perfect 5th, Low-High: Page 5 | |
| • Exercise #3-Minor 6th, Low-High: Page 5 | |
| • Exercise #3a-Minor 6th, Low-High: Page 5 | |
| • Exercise #4-Perfect 4th, High-Low: Page 6 | |
| • Exercise #4a-Perfect 4th, High-Low: Page 6 | |
| • Exercise #5-Perfect 5th, High-Low: Page 6 | |
| • Exercise #5a-Perfect 5th, High-Low: Page 7 | |
| • Exercise #6-Minor 6th, High-Low: Page 7 | |
| • Exercise #6a-Minor 6th, High-Low: Page 7 | |
| Fingering Exercises..... | Page 8 |
| • 4 Note Cells-Patterns A-L: Page 8-9 | |
| • 6 Note Cells-Patterns A-L: Page 10-13 | |
| Trill Exercises..... | Page 14 |
| • Key of Eb Trills: Page 14 | |
| • Key of F Trills: Page 17 | |
| • Trill Eb and Bb Major Chord: Page 21 | |
| • Trill F and C Major Chord: Page 21 | |
| Intonation Exercises..... | Page 22 |
| • Fundamental Tuning Notes: Page 22 | |
| • Bb Tuning (Equal Temperament): Page 22 | |
| • Bb Tuning (Just Intonation): Page 22 | |
| • F Tuning (Equal Temperament and Just Intonation): Page 23 | |
| • Eb Tuning (Equal Temperament and Just Intonation): Page 23 | |
| • Ab Tuning (Equal Temperament and Just Intonation): Page 24 | |
| • C Tuning (Equal Temperament and Just Intonation): Page 24 | |

Mouthpiece Exercises

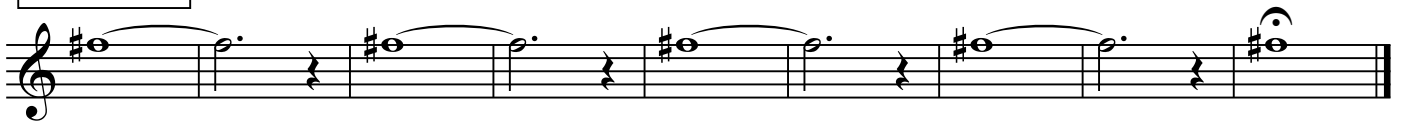
Please note: All notes are concert pitch

F# without neck

Exercise #1



Exercise #2



Exercise #3



Embouchure Development

Exercise #1 - Perfect 4th Low-High

Exercise #1 - Perfect 4th Low-High

Musical notation for Exercise #1, consisting of two staves of music in C major, 4/4 time. The first staff contains eight measures of eighth-note pairs (G4-A4, A4-B4, B4-C5, C5-B4, B4-A4, A4-G4, G4-F4, F4-E4) with slurs and accents. The second staff contains eight measures of eighth-note pairs (E4-D4, D4-C4, C4-B3, B3-A3, A3-G3, G3-F3, F3-E3, E3-D3) with slurs and accents, ending with a whole note G3.

Exercise #1a - Perfect 4th Low-High

Exercise #1a - Perfect 4th Low-High

Musical notation for Exercise #1a, consisting of two staves of music in C major, 4/4 time. The first staff contains eight measures of eighth-note pairs (G4-A4, A4-B4, B4-C5, C5-B4, B4-A4, A4-G4, G4-F4, F4-E4) with slurs and accents. The second staff contains eight measures of eighth-note pairs (E4-D4, D4-C4, C4-B3, B3-A3, A3-G3, G3-F3, F3-E3, E3-D3) with slurs and accents, ending with a whole note G3.

Exercise #2 - Perfect 5th Low-High

Exercise #2 - Perfect 5th Low-High

Musical notation for Exercise #2, consisting of two staves of music in C major, 4/4 time. The first staff contains eight measures of eighth-note pairs (G4-A4, A4-B4, B4-C5, C5-B4, B4-A4, A4-G4, G4-F4, F4-E4) with slurs and accents. The second staff contains eight measures of eighth-note pairs (E4-D4, D4-C4, C4-B3, B3-A3, A3-G3, G3-F3, F3-E3, E3-D3) with slurs and accents, ending with a whole note G3.

INSIDE THE CIRCLE: A PROVEN METHOD FOR A SUCCESSFUL MARCHING BAND

WOODWIND CHAPTER: BASS CLARINET PART (2nd ed.)

by Matt and Ben Harloff

Embouchure Development

Exercise #2a - Perfect 5th Low-High

Exercise #2a - Perfect 5th Low-High

This exercise consists of two staves of music. The first staff contains two measures of music, each with a pair of eighth notes beamed together, followed by a quarter rest. The notes are G4 and D5 in the first measure, and E5 and A5 in the second. The second staff contains two measures of music, each with a pair of eighth notes beamed together, followed by a quarter rest. The notes are B5 and F#6 in the first measure, and G6 and D7 in the second. The final measure of the second staff contains a whole note G6.

Exercise #3 - Minor 6th Low-High

Exercise #3 - Minor 6th Low-High

This exercise consists of two staves of music. The first staff contains two measures of music, each with a pair of eighth notes beamed together, followed by a quarter rest. The notes are G4 and E4 in the first measure, and F4 and D4 in the second. The second staff contains two measures of music, each with a pair of eighth notes beamed together, followed by a quarter rest. The notes are C4 and G3 in the first measure, and F3 and D3 in the second. The final measure of the second staff contains a whole note G3.

Exercise #3a - Minor 6th Low-High

Exercise #3a - Minor 6th Low-High

This exercise consists of two staves of music. The first staff contains two measures of music, each with a pair of eighth notes beamed together, followed by a quarter rest. The notes are G4 and E4 in the first measure, and F4 and D4 in the second. The second staff contains two measures of music, each with a pair of eighth notes beamed together, followed by a quarter rest. The notes are C4 and G3 in the first measure, and F3 and D3 in the second. The final measure of the second staff contains a whole note G3.

INSIDE THE CIRCLE: A PROVEN METHOD FOR A SUCCESSFUL MARCHING BAND

WOODWIND CHAPTER: BASS CLARINET PART (2nd ed.)

by Matt and Ben Harloff

Embouchure Development

Exercise #4 - Perfect 4th High-Low

Exercise #4 - Perfect 4th High-Low

Musical notation for Exercise #4 - Perfect 4th High-Low, consisting of two staves of music. The first staff contains eight measures of music, and the second staff contains eight measures. The music features a sequence of eighth notes with slurs, alternating between higher and lower registers to illustrate a perfect fourth interval.

Exercise #4a - Perfect 4th High-Low

Exercise #4a - Perfect 4th High-Low

Musical notation for Exercise #4a - Perfect 4th High-Low, consisting of two staves of music. The first staff contains eight measures of music, and the second staff contains eight measures. The music features a sequence of eighth notes with slurs, alternating between higher and lower registers to illustrate a perfect fourth interval.

Exercise #5 - Perfect 5th High-Low

Exercise #5 - Perfect 5th High-Low

Musical notation for Exercise #5 - Perfect 5th High-Low, consisting of two staves of music. The first staff contains eight measures of music, and the second staff contains eight measures. The music features a sequence of eighth notes with slurs, alternating between higher and lower registers to illustrate a perfect fifth interval.

INSIDE THE CIRCLE: A PROVEN METHOD FOR A SUCCESSFUL MARCHING BAND

WOODWIND CHAPTER: BASS CLARINET PART (2nd ed.)

by Matt and Ben Harloff

Embouchure Development

Exercise #5a - Perfect 5th High-Low

Exercise #5a - Perfect 5th High-Low

This exercise consists of two staves of music. The first staff contains eight measures of music, each featuring a pair of notes (a perfect fifth interval) with a slur above them. The notes are: G4-A4, F4-G4, E4-F4, D4-E4, C4-D4, B3-C4, A3-B3, and G3-A3. The second staff contains eight measures of music, each featuring a pair of notes (a perfect fifth interval) with a slur above them. The notes are: G4-A4, F4-G4, E4-F4, D4-E4, C4-D4, B3-C4, A3-B3, and G3-A3. The key signature is one flat (Bb).

Exercise #6 - Minor 6th High-Low

Exercise #6 - Minor 6th High-Low

This exercise consists of two staves of music. The first staff contains eight measures of music, each featuring a pair of notes (a minor sixth interval) with a slur above them. The notes are: G4-A4, F4-G4, E4-F4, D4-E4, C4-D4, B3-C4, A3-B3, and G3-A3. The second staff contains eight measures of music, each featuring a pair of notes (a minor sixth interval) with a slur above them. The notes are: G4-A4, F4-G4, E4-F4, D4-E4, C4-D4, B3-C4, A3-B3, and G3-A3. The key signature is one flat (Bb).

Exercise #6a - Minor 6th High-Low

Exercise #6a - Minor 6th High-Low

This exercise consists of two staves of music. The first staff contains eight measures of music, each featuring a pair of notes (a minor sixth interval) with a slur above them. The notes are: G4-A4, F4-G4, E4-F4, D4-E4, C4-D4, B3-C4, A3-B3, and G3-A3. The second staff contains eight measures of music, each featuring a pair of notes (a minor sixth interval) with a slur above them. The notes are: G4-A4, F4-G4, E4-F4, D4-E4, C4-D4, B3-C4, A3-B3, and G3-A3. The key signature is one flat (Bb).

Fingering Exercises: 4 Note Cells

Pattern A

A2

A3

A4



Pattern B

B2

B3

B4



Pattern C

C2

C3

C4



Pattern D

D2

D3

D4



Pattern E

E2

E3

E4

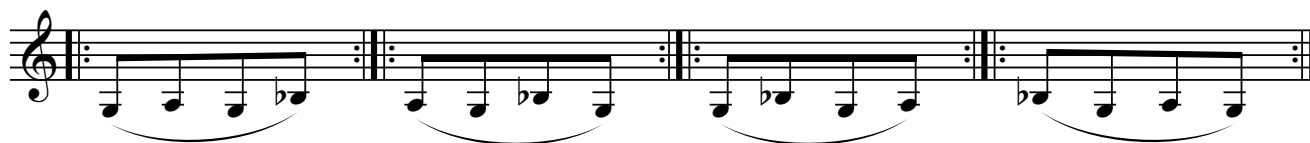


Pattern F

F2

F3

F4



INSIDE THE CIRCLE: A PROVEN METHOD FOR A SUCCESSFUL MARCHING BAND

WOODWIND CHAPTER: BASS CLARINET PART (2nd ed.)

by Matt and Ben Harloff

Fingering Exercises: 4 Note Cells

Pattern G

G2

G3

G4

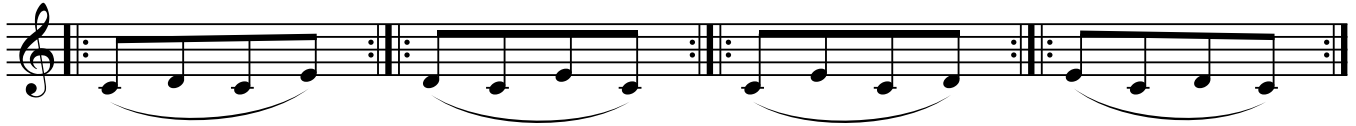


Pattern H

H2

H3

H4

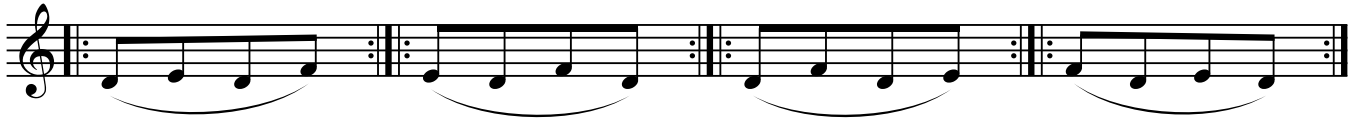


Pattern I

I2

I3

I4

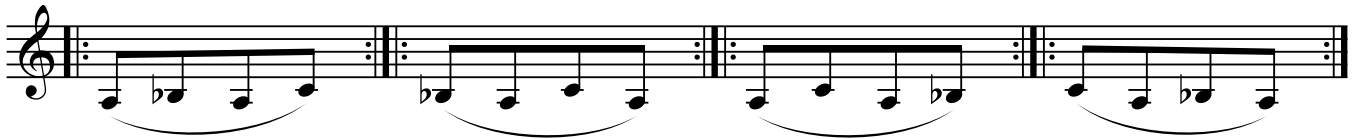


Pattern J

J2

J3

J4

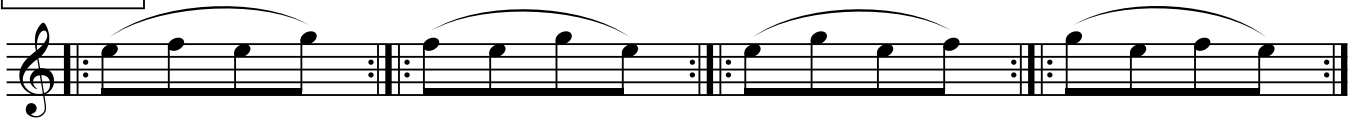


Pattern K

K2

K3

K4

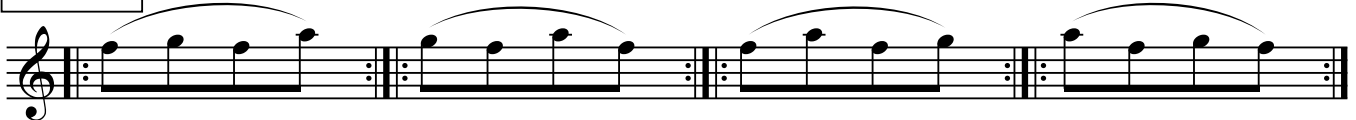


Pattern L

L2

L3

L4



Fingering Exercises: 6 Note Cells

Pattern A

A2

A3



A4

A5

A6



Pattern B

B2

B3



B4

B5

B6



Pattern C

C2

C3



Use fork F#

C4

C5

C6



Pattern D

D2

D3



D4

D5

D6



INSIDE THE CIRCLE: A PROVEN METHOD FOR A SUCCESSFUL MARCHING BAND

WOODWIND CHAPTER: BASS CLARINET PART (2nd ed.)

by Matt and Ben Harloff

Fingering Exercises: 6 Note Cells

Pattern E

Two measures of music for Pattern E. The first measure is labeled E2 and the second is labeled E3. Both measures contain a six-note cell: E4, F#4, G4, A4, Bb4, and C5. The notes are beamed together and have a slur above them. Each measure ends with a repeat sign.

Three measures of music for Pattern E. The first measure is labeled E4, the second is labeled E5, and the third is labeled E6. Each measure contains a six-note cell with a slur and repeat sign.

Pattern F

Three measures of music for Pattern F. The first measure is labeled F2, the second is labeled F3, and the third is labeled F4. Each measure contains a six-note cell: F4, G4, A4, Bb4, C5, and D5. The notes are beamed together and have a slur above them. Each measure ends with a repeat sign.

Four measures of music for Pattern F. The first measure is labeled F5, the second is labeled F6, the third is labeled F7, and the fourth is labeled F8. Each measure contains a six-note cell with a slur and repeat sign.

Four measures of music for Pattern F. The first measure is labeled F9, the second is labeled F10, the third is labeled F11, and the fourth is labeled F12. Each measure contains a six-note cell with a slur and repeat sign.

Pattern G

Three measures of music for Pattern G. The first measure is labeled G2, the second is labeled G3, and the third is labeled G4. Each measure contains a six-note cell: G4, Ab4, Bb4, C5, D5, and E5. The notes are beamed together and have a slur above them. Each measure ends with a repeat sign.

Four measures of music for Pattern G. The first measure is labeled G5, the second is labeled G6, the third is labeled G7, and the fourth is labeled G8. Each measure contains a six-note cell with a slur and repeat sign.

Four measures of music for Pattern G. The first measure is labeled G9, the second is labeled G10, the third is labeled G11, and the fourth is labeled G12. Each measure contains a six-note cell with a slur and repeat sign.

INSIDE THE CIRCLE: A PROVEN METHOD FOR A SUCCESSFUL MARCHING BAND

WOODWIND CHAPTER: BASS CLARINET PART (2nd ed.)

by Matt and Ben Harloff

Fingering Exercises: 6 Note Cells

Pattern H

H2 H3 H4



H5

H6

H7

H8



H9

H10

H11

H12



Pattern I

I2 I3 I4



I5

I6

I7

I8



I9

I10

I11

I12



Pattern J

J2 J3 J4



J5

J6

J7

J8



J9

J10

J11

J12



INSIDE THE CIRCLE: A PROVEN METHOD FOR A SUCCESSFUL MARCHING BAND

WOODWIND CHAPTER: BASS CLARINET PART (2nd ed.)

by Matt and Ben Harloff

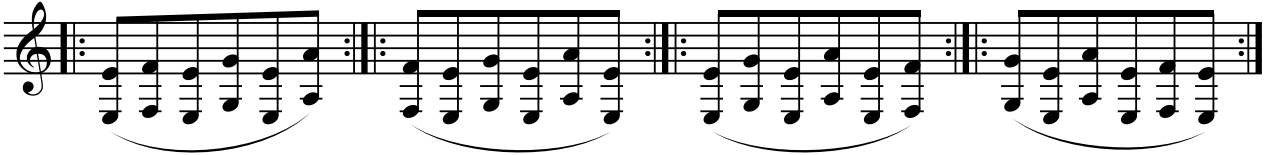
Fingering Exercises: 6 Note Cells

Pattern K

K2

K3

K4

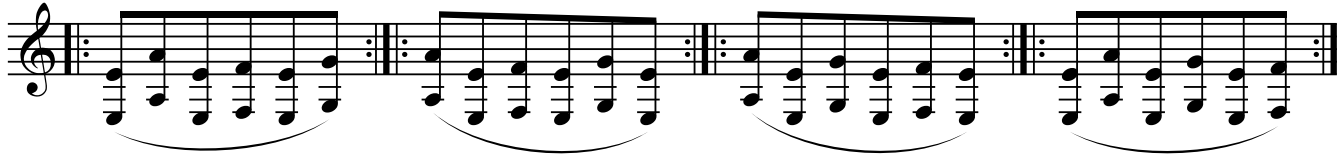


K5

K6

K7

K8



K9

K10

K11

K12

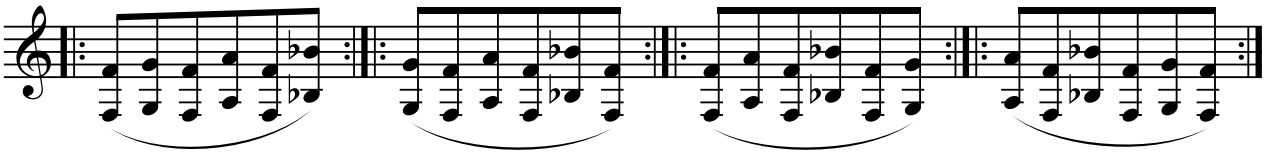


Pattern L

L2

L3

L4

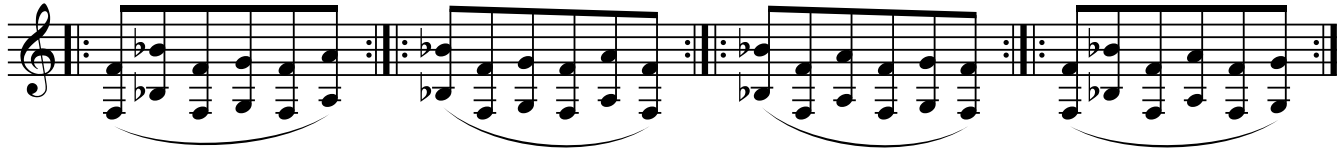


L5

L6

L7

L8

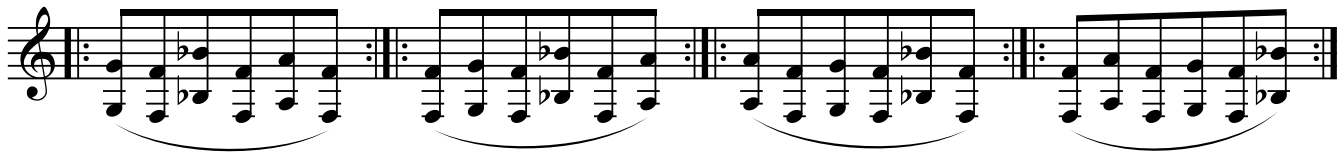


L9

L10

L11

L12



INSIDE THE CIRCLE: A PROVEN METHOD FOR A SUCCESSFUL MARCHING BAND

WOODWIND CHAPTER: BASS CLARINET PART (2nd ed.)

by Matt and Ben Harloff

Trill Exercises

E♭ #3

The first exercise, labeled 'Eb #3', is written on three staves of music. The first staff contains two measures of music, each featuring a trill of eighth notes with a '3' above the notes. The second staff contains four measures of music, each featuring a trill of eighth notes with a '3' above the notes. The third staff contains four measures of music, each featuring a trill of eighth notes with a '3' above the notes. The music is in the key of E-flat major and 3/4 time.

E♭ #4

The second exercise, labeled 'Eb #4', is written on three staves of music. The first staff contains two measures of music, each featuring a trill of eighth notes with a '3' above the notes. The second staff contains four measures of music, each featuring a trill of eighth notes with a '3' above the notes. The third staff contains four measures of music, each featuring a trill of eighth notes with a '3' above the notes. The music is in the key of E-flat major and 3/4 time.

INSIDE THE CIRCLE: A PROVEN METHOD FOR A SUCCESSFUL MARCHING BAND

WOODWIND CHAPTER: BASS CLARINET PART (2nd ed.)

by Matt and Ben Harloff

Trill Exercises

E♭ #5

The first staff of music for Exercise Eb #5 begins with a treble clef, a key signature of one flat (B♭), and a common time signature. It contains four groups of eighth-note triplets, each marked with a '3' above the notes. The first two groups are followed by a bar line, and the last two groups are followed by a final double bar line. The second and third staves continue the exercise with similar triplet patterns, also marked with '3's. The third staff concludes with a final double bar line and a whole note on the staff.

E♭ #6

The first staff of music for Exercise Eb #6 begins with a treble clef, a key signature of one flat (B♭), and a common time signature. It contains four groups of eighth-note triplets, each marked with a '3' above the notes. The first two groups are followed by a bar line, and the last two groups are followed by a final double bar line. The second and third staves continue the exercise with similar triplet patterns, also marked with '3's. The third staff concludes with a final double bar line and a whole note on the staff.

INSIDE THE CIRCLE: A PROVEN METHOD FOR A SUCCESSFUL MARCHING BAND

WOODWIND CHAPTER: BASS CLARINET PART (2nd ed.)

by Matt and Ben Harloff

Trill Exercises

E♭ #7

Three staves of musical notation for Eb #7 trill exercises. The first staff contains two measures of trills, each with a slur over the notes and a '3' below. The second staff contains two measures of trills, each with a slur over the notes and a '3' below. The third staff contains two measures of trills, each with a slur over the notes and a '3' below.

Key of F Trills

F #1

Three staves of musical notation for Key of F Trills. The first staff contains two measures of trills, each with a slur over the notes and a '3' below. The second staff contains two measures of trills, each with a slur over the notes and a '3' below. The third staff contains two measures of trills, each with a slur over the notes and a '3' below.

INSIDE THE CIRCLE: A PROVEN METHOD FOR A SUCCESSFUL MARCHING BAND

WOODWIND CHAPTER: BASS CLARINET PART (2nd ed.)

by Matt and Ben Harloff

Trill Exercises

F #2

Trill Exercise F #2 consists of three staves of music in treble clef with a key signature of one sharp (F#). The first staff contains four groups of eighth-note trills, each marked with a '3' above it. The second staff contains four groups of sixteenth-note trills, each marked with a '3' above it. The third staff contains four groups of thirty-second-note trills, each marked with a '3' above it. The music concludes with a whole note on the bottom line of the staff.

F #3

Trill Exercise F #3 consists of three staves of music in treble clef with a key signature of one sharp (F#). The first staff contains four groups of eighth-note trills, each marked with a '3' above it. The second staff contains four groups of sixteenth-note trills, each marked with a '3' above it. The third staff contains four groups of thirty-second-note trills, each marked with a '3' above it. The music concludes with a whole note on the bottom line of the staff.

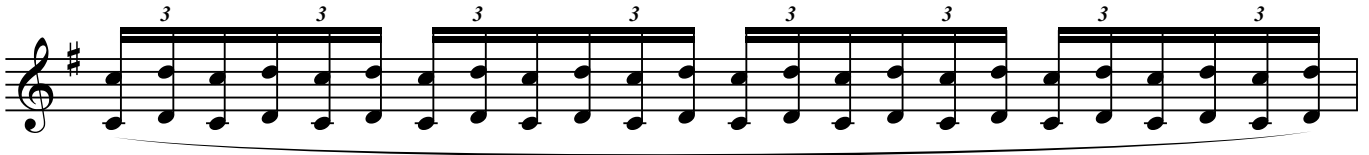
INSIDE THE CIRCLE: A PROVEN METHOD FOR A SUCCESSFUL MARCHING BAND

WOODWIND CHAPTER: BASS CLARINET PART (2nd ed.)

by Matt and Ben Harloff

Trill Exercises

F #4



F #5



INSIDE THE CIRCLE: A PROVEN METHOD FOR A SUCCESSFUL MARCHING BAND

WOODWIND CHAPTER: BASS CLARINET PART (2nd ed.)

by Matt and Ben Harloff

Trill Exercises

F #6

Trill Exercise F #6 consists of three staves of music in treble clef with a key signature of one sharp (F#). The first staff contains two measures of trills, each marked with a '3' below. The second staff contains two measures of trills, each marked with a '3' below. The third staff contains two measures of trills, each marked with a '3' below, followed by a whole rest on the final note of the second measure.

F #7

Trill Exercise F #7 consists of three staves of music in treble clef with a key signature of two sharps (F# and C#). The first staff contains two measures of trills, each marked with a '3' below. The second staff contains two measures of trills, each marked with a '3' below. The third staff contains two measures of trills, each marked with a '3' below, followed by a whole rest on the final note of the second measure.

INSIDE THE CIRCLE: A PROVEN METHOD FOR A SUCCESSFUL MARCHING BAND

WOODWIND CHAPTER: BASS CLARINET PART (2nd ed.)

by Matt and Ben Harloff

Trill Exercises

Trill Eb Major Chord

Musical notation for Trill Eb Major Chord exercise. The staff shows a treble clef with a key signature of two flats (Bb and Eb). The exercise begins with two whole notes: Eb and Bb. This is followed by a trill exercise starting on Eb, marked with a forte (f) dynamic and a wavy line above the notes. The trill consists of 16 notes, alternating between Eb and Bb, grouped into four measures of four notes each. The exercise concludes with a whole note Eb.

Trill Bb Major Chord

Musical notation for Trill Bb Major Chord exercise. The staff shows a treble clef with a key signature of two flats (Bb and Eb). The exercise begins with two whole notes: Bb and Eb. This is followed by a trill exercise starting on Bb, marked with a forte (f) dynamic and a wavy line above the notes. The trill consists of 16 notes, alternating between Bb and Eb, grouped into four measures of four notes each. The exercise concludes with a whole note Bb.

Trill F Major Chord

Musical notation for Trill F Major Chord exercise. The staff shows a treble clef with a key signature of one sharp (F#). The exercise begins with two whole notes: F# and C#. This is followed by a trill exercise starting on F#, marked with a forte (f) dynamic and a wavy line above the notes. The trill consists of 16 notes, alternating between F# and C#, grouped into four measures of four notes each. The exercise concludes with a whole note F#.

Trill C Major Chord

Musical notation for Trill C Major Chord exercise. The staff shows a treble clef with a key signature of two sharps (F# and C#). The exercise begins with two whole notes: C# and G#. This is followed by a trill exercise starting on C#, marked with a forte (f) dynamic and a wavy line above the notes. The trill consists of 16 notes, alternating between C# and G#, grouped into four measures of four notes each. The exercise concludes with a whole note C#.

Intonation Exercises

Fundamental Tuning Notes

A musical staff in treble clef with a common time signature (C). It contains four measures, each with a single note on a grand staff (treble and bass clefs). The notes are: C2 (two ledger lines below), C3 (one ledger line below), C4 (middle C, one ledger line below), and C5 (middle C, one ledger line below).

Bb Tuning (Equal Temperament)

A musical staff in treble clef with a common time signature (C). It contains eight measures, each with a pair of notes on a grand staff. The notes are: Bb2 and Bb3, Bb4 and Bb4, Bb5 and Bb5, Bb6 and Bb6, Bb7 and Bb7, Bb8 and Bb8, Bb9 and Bb9, and Bb10 and Bb10.

Bb Tuning (Just Intonation)

A musical staff in treble clef with a common time signature (C). It contains four measures, each with a pair of notes on a grand staff. The notes are: Bb2 and Bb3, Bb4 and Bb4, Bb5 and Bb5, and Bb6 and Bb6. Fingerings are indicated below the notes: 0, +4, -14, and -2.

A musical staff in treble clef with a 2/4 time signature. It contains four measures, each with a pair of notes on a grand staff. The notes are: Bb7 and Bb7, Bb8 and Bb8, Bb9 and Bb9, and Bb10 and Bb10. Fingerings are indicated below the notes: +2, -15, and -12.

A musical staff in treble clef with a 2/4 time signature. It contains four measures, each with a pair of notes on a grand staff. The notes are: Bb11 and Bb11, Bb12 and Bb12, Bb13 and Bb13, and Bb14 and Bb14. Fingerings are indicated below the notes: 0, 5: +2, 3: -14, 1: 0, 5: +2, 3: +15, 1: 0.

INSIDE THE CIRCLE: A PROVEN METHOD FOR A SUCCESSFUL MARCHING BAND

WOODWIND CHAPTER: BASS CLARINET PART (2nd ed.)

by Matt and Ben Harloff

Intonation Exercises

F Tuning (Equal Temperament)

Musical notation for F Tuning (Equal Temperament) in treble clef with a key signature of one sharp (F#). The staff contains eight measures of music, each featuring a pair of notes (a dyad) with a fermata above them. The notes are: F#4-G4, A4-B4, C5-D5, E5-F5, G5-A5, B5-C6, D6-E6, and F6-G6.

F Tuning (Just Intonation)

Musical notation for F Tuning (Just Intonation) in treble clef with a key signature of one sharp (F#). The staff contains three lines of music. Each line has four measures. The first measure of each line is a rest. The second measure contains a pair of notes with a fermata and a bracket underneath, with a cent deviation value below it. The third measure is a rest. The fourth measure contains a pair of notes with a fermata and a bracket underneath, with a cent deviation value below it. The cent deviation values are: +4, -14, -2, +2, -15, -12, 0, 5: +2, 3: -14, 1: 0, 5: +2, 3: +15, 1: 0.

Eb Tuning (Equal Temperament)

Musical notation for Eb Tuning (Equal Temperament) in treble clef with a key signature of two flats (Bb, Eb). The staff contains eight measures of music, each featuring a pair of notes (a dyad) with a fermata above them. The notes are: Bb4-Cb5, Db5-Eb5, Fb5-Gb5, Ab5-Bb5, Cb6-Db6, Eb6-Fb6, Gb6-Ab6, and Bb6-Cb7.

Eb Tuning (Just Intonation)

Musical notation for Eb Tuning (Just Intonation) in treble clef with a key signature of two flats (Bb, Eb). The staff contains three lines of music. Each line has four measures. The first measure of each line is a rest. The second measure contains a pair of notes with a fermata and a bracket underneath, with a cent deviation value below it. The third measure is a rest. The fourth measure contains a pair of notes with a fermata and a bracket underneath, with a cent deviation value below it. The cent deviation values are: +4, -14, -2, +2, -15, -12, 0, 5: +2, 3: -14, 1: 0, 5: +2, 3: +15, 1: 0.

INSIDE THE CIRCLE: A PROVEN METHOD FOR A SUCCESSFUL MARCHING BAND
WOODWIND CHAPTER: BASS CLARINET PART (2nd ed.)

by Matt and Ben Harloff

Intonation Exercises

Ab Tuning (Equal Temperament)

Musical notation for Ab Tuning (Equal Temperament) on a treble clef staff. The key signature has two flats (Bb and Eb). The notes are Ab, Bb, C, D, Eb, F, G, Ab, arranged in a sequence of eighth notes.

Ab Tuning (Just Intonation)

Musical notation for Ab Tuning (Just Intonation) on a treble clef staff. The key signature has two flats. The notes are Ab, Bb, C, D, Eb, F, G, Ab, arranged in a sequence of eighth notes. The notation includes fingerings and intonation adjustments: 0, +4, -14, -2, +2, -15, -12, and a final triplet with adjustments: 5: +2, 3: -14, 1: 0, 5: +2, 3: +15, 1: 0.

C Tuning (Equal Temperament)

Musical notation for C Tuning (Equal Temperament) on a treble clef staff. The key signature has two sharps (F# and C#). The notes are C, D, E, F#, G, A, B, C, arranged in a sequence of eighth notes.

C Tuning (Just Intonation)

Musical notation for C Tuning (Just Intonation) on a treble clef staff. The key signature has two sharps. The notes are C, D, E, F#, G, A, B, C, arranged in a sequence of eighth notes. The notation includes fingerings and intonation adjustments: 0, +4, -14, -2, +2, -15, -12, and a final triplet with adjustments: 5: +2, 3: -14, 1: 0, 5: +2, 3: +15, 1: 0.